

# Al-Ni-Sm (Aluminum-Nickel-Samarium)

V. Raghavan

Recently, [2008Del] determined an isothermal section for this system at 500 °C in the 40-100 at.% Al region, which depicts six ternary compounds.

## Binary Systems

The Al-Ni phase diagram [1993Oka] shows five intermediate phases: NiAl<sub>3</sub> (*D0*<sub>11</sub>, Fe<sub>3</sub>C-type orthorhombic), Ni<sub>2</sub>Al<sub>3</sub> (*D5*<sub>13</sub>-type hexagonal, denoted δ), NiAl (*B2*, CsCl-type cubic, denoted β), Ni<sub>5</sub>Al<sub>3</sub> (Ga<sub>3</sub>Pt<sub>5</sub>-type orthorhombic), and Ni<sub>3</sub>Al (*L1*<sub>2</sub>, AuCu<sub>3</sub>-type cubic, denoted γ'). The Al-Sm phase diagram [Massalski2, 2007Del] depicts the following intermediate phases: Sm<sub>3</sub>Al<sub>11</sub> (*D1*<sub>3</sub>, Al-deficient Al<sub>4</sub>Ba-type tetragonal), SmAl<sub>3</sub> (*D0*<sub>19</sub>, Ni<sub>3</sub>Sn-type hexagonal), SmAl<sub>2</sub> (*C15*, MgCu<sub>2</sub>-type cubic), SmAl (ErAl-type orthorhombic), and Sm<sub>2</sub>Al (*C23*, Co<sub>2</sub>Si-type orthorhombic). The Ni-Sm phase diagram [Massalski2] depicts a number of intermediate phases, none of which are relevant to the equilibria in Al-rich alloys discussed here.

## Ternary Compounds

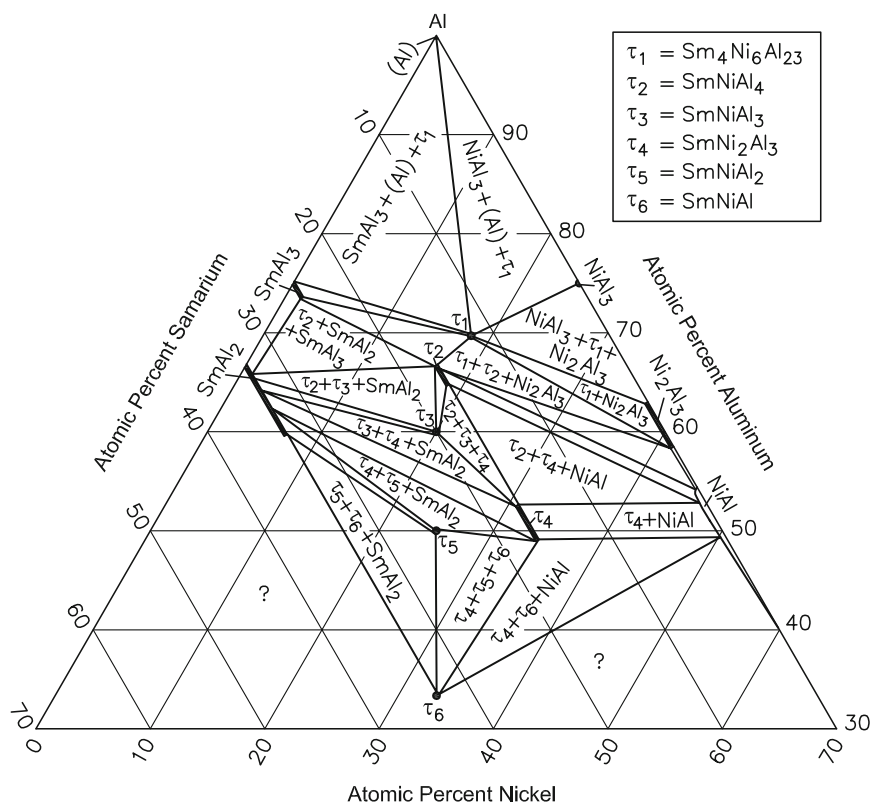
In addition to the four previously-known ternary compounds, Sm<sub>4</sub>Ni<sub>6</sub>Al<sub>23</sub> (τ<sub>1</sub>), SmNiAl<sub>4</sub> (τ<sub>2</sub>), SmNiAl<sub>2</sub> (τ<sub>5</sub>), and SmNiAl (τ<sub>6</sub>), [2008Del] found two new ternary compounds, SmNiAl<sub>3</sub> (τ<sub>3</sub>) and SmNi<sub>2</sub>Al<sub>3</sub> (τ<sub>4</sub>). The structural details of these compounds are listed in Table 1. The notations τ<sub>1</sub>, τ<sub>2</sub>, etc. given above in brackets correspond to the numbers 1, 2, etc. used by [2008Del]. Along the line of constant Sm equal to 16.7 at.%, an additional phase SmNi<sub>4</sub>Al (CaCu<sub>5</sub>-type) was reported by [1978Tak], see Table 1. This phase, however, was not found by [2008Del] at 500 °C. [2008Del] pointed out that, in RNi<sub>5-x</sub>Al<sub>x</sub> (*R* = rare earth), CaCu<sub>5</sub>-type of structure forms for *x* < 2 and the HoNi<sub>2.6</sub>Ga<sub>2.4</sub>-type of structure is found for *x* ≥ 2.

## Isothermal Section

With starting metals of 99.999% Al, 99.99% Ni, and 99.9% Sm, [2008Del] induction-melted 47 alloy samples in

**Table 1** Al-Ni-Sm crystal structure and lattice parameter data [2008Del]

Phase	Composition, at.%	Pearson symbol	Space group	Prototype	Lattice parameter, nm
Sm <sub>4</sub> Ni <sub>6</sub> Al <sub>23</sub> (τ <sub>1</sub> )	69.7 Al 18.2 Ni 12.1 Sm	<i>mC66</i>	<i>C2/m</i>	Y <sub>4</sub> Ni <sub>6</sub> Al <sub>23</sub>	<i>a</i> = 1.5939 <i>b</i> = 0.40967 <i>c</i> = 1.8320 β = 113.09°
SmNiAl <sub>4</sub> (τ <sub>2</sub> )	64.7-66.7 Al 18.7-16.7 Ni 16.7 Sm	<i>oC24</i>	<i>Cmcm</i>	YNiAl <sub>4</sub>	<i>a</i> = 0.40948 <i>b</i> = 1.5582 <i>c</i> = 0.6610
SmNiAl <sub>3</sub> (τ <sub>3</sub> )	60 Al 20 Ni 20 Sm	<i>oP20</i>	<i>Pnma</i>	YNiAl <sub>3</sub>	<i>a</i> = 0.8197 <i>b</i> = 0.4087 <i>c</i> = 1.0713
SmNi <sub>2</sub> Al <sub>3</sub> (τ <sub>4</sub> )	49-52.5 Al 34.3-30.8 Ni 16.7 Sm	<i>hP18</i>	<i>P6/mmm</i>	HoNi <sub>2.6</sub> Ga <sub>2.4</sub>	<i>a</i> = 0.9141 <i>c</i> = 0.4039
SmNiAl <sub>2</sub> (τ <sub>5</sub> )	50 Al 25 Ni 25 Sm	<i>oC16</i>	<i>Cmcm</i>	CuMgAl <sub>2</sub>	<i>a</i> = 0.4058 <i>b</i> = 1.0519 <i>c</i> = 0.6903
SmNiAl (τ <sub>6</sub> )	33.3 Al 33.3 Ni 33.3 Sm	<i>hP9</i>	<i>P<math>\bar{6}</math>2m</i>	ZrNiAl	<i>a</i> = 0.6986 <i>c</i> = 0.4008
SmNi <sub>4</sub> Al	16.7 Al 66.7 Ni 16.7 Sm	<i>hP6</i>	<i>P6/mmm</i>	CaCu <sub>5</sub>	<i>a</i> = 0.4980 <i>c</i> = 0.4050



**Fig. 1** Al-Ni-Sm isothermal section at 500 °C in the 40-100 at.% Al range [2008Del]

the range of 40-100 at.% Al. The alloys were annealed at 500 °C for 20 d and quenched in water. The phase equilibria were studied with x-ray powder diffraction, optical microscopy and a scanning electron microscope equipped with energy dispersive x-ray analyzer. The measured compositions of the coexisting phases were listed. The isothermal section at 500 °C constructed by [2008Del] is shown in Fig. 1. The six ternary phases  $\tau_1$  through  $\tau_6$  are present. The phases  $\text{SmNiAl}_4$  ( $\tau_2$ ) and  $\text{SmNi}_2\text{Al}_3$  ( $\tau_4$ ) show a homogeneity range of about 2 and 3.5 at.% Al (or Ni) respectively at constant Sm content. The binary phases  $\text{SmAl}_2$  and  $\text{SmAl}_3$  dissolve up to 7 and 1.5 at.% Ni at constant Sm content.  $\text{NiAl}$  dissolves up to 1 at.% Sm.

## References

- 1978Tak:** T. Takeshita, S.K. Malik, and W.E. Wallace, Hydrogen Absorption in  $\text{RNi}_4\text{Al}$  (R = Rare Earth) Ternary Compounds, *J. Solid State Chem.*, 1978, **23**, p 271-274
- 1993Oka:** H. Okamoto, Al-Ni (Aluminum-Nickel), *J. Phase Equilib.*, 1993, **14**(2), p 257-259
- 2007Del:** S. Delsante, R. Raggio, G. Borzone, and R. Ferro, A Revision of the Al-Rich Region of the Sm-Al Phase Diagram: The  $\text{Sm}_3\text{Al}_{11}$  Phase, *J. Phase Equilib. Diffus.*, 2007, **28**(3), p 240-242
- 2008Del:** S. Delsante, R. Raggio, and G. Borzone, Phase Relations of the Sm-Ni-Al Ternary System at 500°C in the 40-100 at.% Al Region, *Intermetallics*, 2008, **16**, p 1250-1257